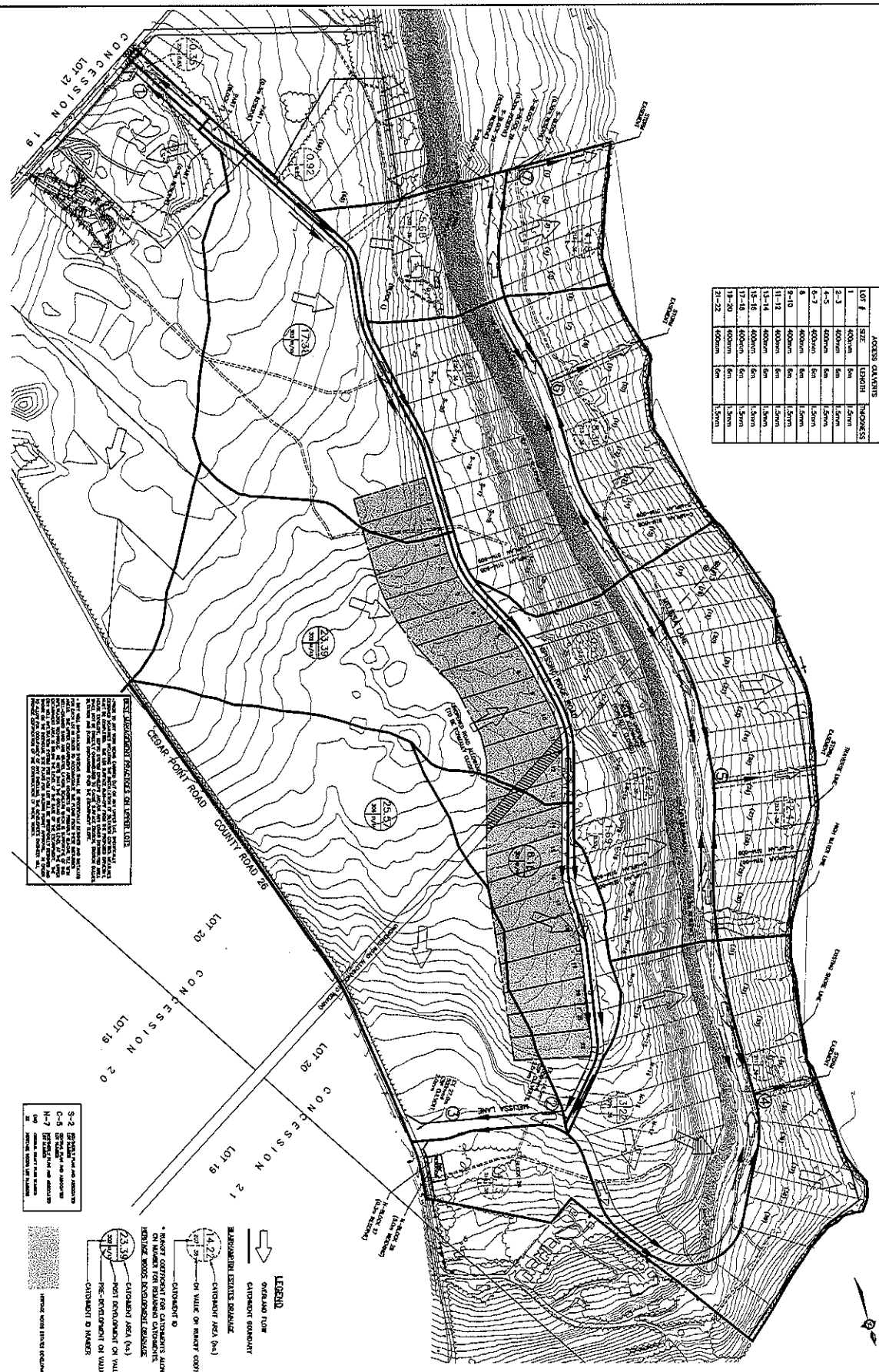


LOT #	SIZE	LENGTH	THICKNESS
1	400x40m	50m	1.50m
2-3	400x40m	50m	1.50m
4-5	400x40m	50m	1.50m
6-7	400x40m	50m	1.50m
8	400x40m	50m	1.50m
9-10	400x40m	50m	1.50m
11-12	400x40m	50m	1.50m
13-14	400x40m	50m	1.50m
15-16	400x40m	50m	1.50m
17-18	400x40m	50m	1.50m
19-20	400x40m	50m	1.50m
21-22	400x40m	50m	1.50m



MANWAY COVER REQUIREMENTS ON LOT 19

1. The manway cover shall be of a type that is suitable for the intended use and shall be of a material that is resistant to impact and fire.

2. The manway cover shall be of a size that is suitable for the intended use and shall be of a material that is resistant to impact and fire.

3. The manway cover shall be of a type that is suitable for the intended use and shall be of a material that is resistant to impact and fire.

4. The manway cover shall be of a size that is suitable for the intended use and shall be of a material that is resistant to impact and fire.

5. The manway cover shall be of a type that is suitable for the intended use and shall be of a material that is resistant to impact and fire.

6. The manway cover shall be of a size that is suitable for the intended use and shall be of a material that is resistant to impact and fire.

7. The manway cover shall be of a type that is suitable for the intended use and shall be of a material that is resistant to impact and fire.

8. The manway cover shall be of a size that is suitable for the intended use and shall be of a material that is resistant to impact and fire.

9. The manway cover shall be of a type that is suitable for the intended use and shall be of a material that is resistant to impact and fire.

10. The manway cover shall be of a size that is suitable for the intended use and shall be of a material that is resistant to impact and fire.

5-3 2000mm dia. manway cover
 C-4 2000mm dia. manway cover
 14-7 2000mm dia. manway cover
 20 2000mm dia. manway cover

- LEGEND**
- MANWAY COVER
 - CATCHMENT BASIN
 - MANWAY CONNECTION
 - MANWAY COVER (M.C.)
 - CATCHMENT AREA (C.A.)
 - MANWAY CONNECTION ON VALLE OR MANWAY CONNECTION
 - CATCHMENT D
 - MANWAY CONNECTION FOR CATCHMENTS ALONG WINDING ROAD AND IN WINDING ROAD
 - MANWAY CONNECTION FOR CATCHMENTS ALONG WINDING ROAD AND IN WINDING ROAD
 - CATCHMENT AREA (C.A.)
 - MANWAY CONNECTION ON VALLE
 - MANWAY CONNECTION ON VALLE
 - CATCHMENT D

ACCEPTED FOR CONSTRUCTION

ALL WORK TO BE DONE IN ACCORDANCE WITH THE SPECIFICATIONS AND CONDITIONS OF THE CONTRACT AND THE DRAWINGS.

DATE: 2014-11-13

HERITAGE WOODS ESTATES DEVELOPMENT

LOTS 20 AND 21, CONCESSION 20

TOWNSHIP OF BIRCH

STORM DRAINAGE PLAN

NIPissing RIDGE ROAD

ACCOMMODATION

1. LOT 19

2. LOT 20

3. LOT 21

4. LOT 22

CONTRACTOR

1. LOT 19

2. LOT 20

3. LOT 21

4. LOT 22

OWNER

1. LOT 19

2. LOT 20

3. LOT 21

4. LOT 22

DATE

1. LOT 19

2. LOT 20

3. LOT 21

4. LOT 22

SCALE

1:1000

PROJECT NO.

STM-1

DATE

1. LOT 19

2. LOT 20

3. LOT 21

4. LOT 22

PROJECT NO.

STM-1